

Detail Ref.	Detail Title
HH-SW-01	Solid External Masonry Wall, Externally Insulated - Suspended Beam And Block Floor, Insulation Above Slab
HH-SW-02	Solid External Masonry Wall, Externally Insulated - Suspended In-Situ Concrete Floor, Insulation Below Slab
HH-SW-03	Solid External Masonry Wall, Externally Insulated - Concrete Ground Bearing Floor, Insulation Below Slab
HH-SW-04	Solid External Masonry Wall, Externally Insulated - Solid Wall Lintel
HH-SW-05	Solid External Masonry Wall, Externally Insulated - Sill
HH-SW-06	Solid External Masonry Wall, Externally Insulated - Jamb
HH-SW-07	Solid External Masonry Wall, Externally Insulated - Intermediate Timber Floor Within A Dwelling
HH-SW-08	Solid External Masonry Wall, Externally Insulated - Precast Concrete Separating Floor Between Dwellings
HH-SW-09	Solid External Masonry Wall, Externally Insulated - Pitched Roof, Gable, Insulation At Ceiling Level, Ventilated Loft
HH-SW-10	Solid External Masonry Wall, Externally Insulated - Pitched Roof, Gable, Insulation At Rafter Level, Unventilated Rafter Void
HH-SW-11	Solid External Masonry Wall, Externally Insulated - Pitched Roof, Eaves, Insulation At Ceiling Level, Ventilated Loft
HH-SW-12	Solid External Masonry Wall, Externally Insulated - Pitched Roof, Eaves, Insulation At Rafter Level, Unventilated Rafter Void
HH-SW-13	Solid External Masonry Wall, Externally Insulated - Normal Corner
HH-SW-14	Solid External Masonry Wall, Externally Insulated - Inverted Corner
HH-SW-15	Solid External Masonry Wall, Externally Insulated - Party Wall Between Dwellings

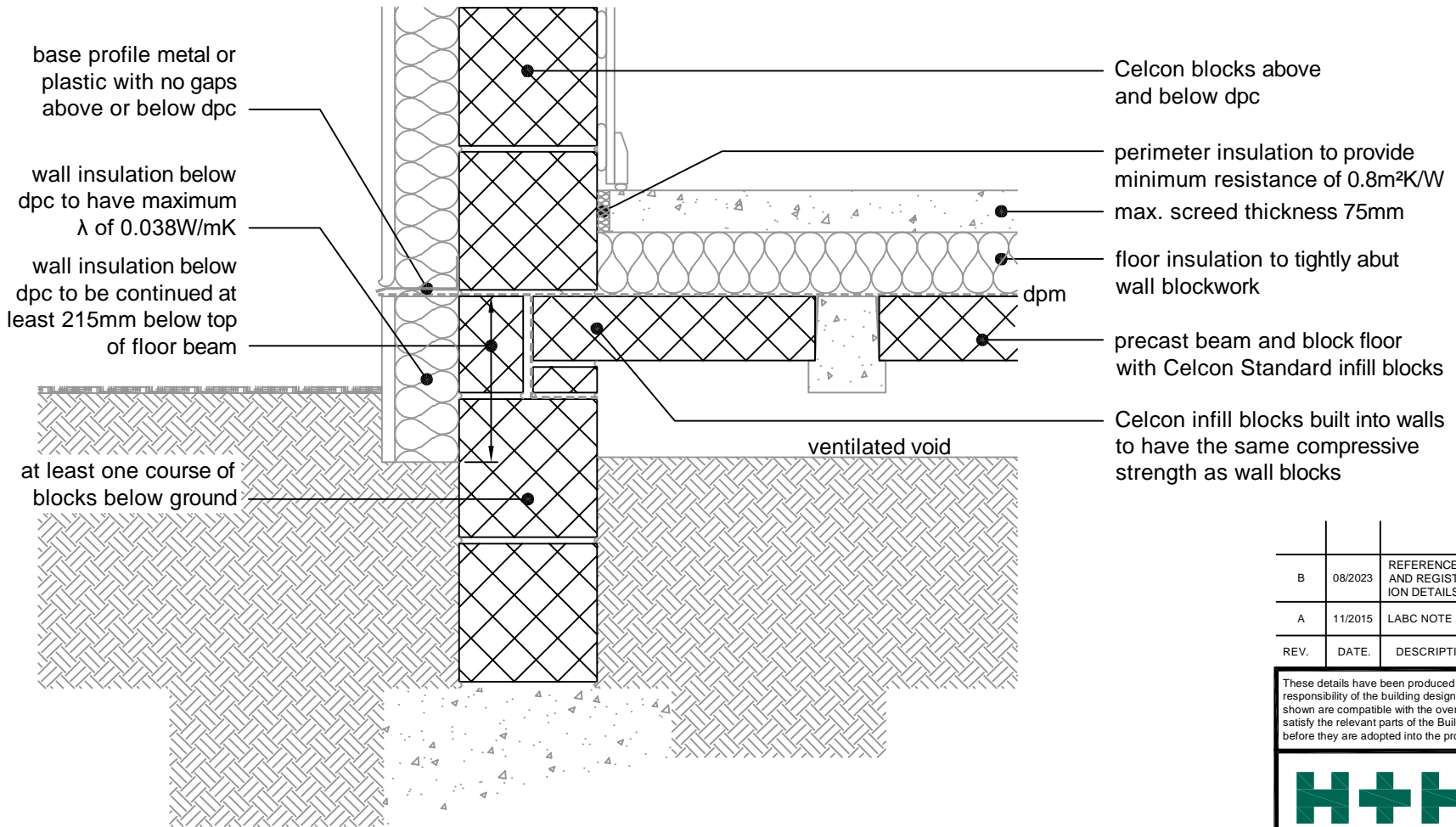
REV.	DATE.	DESCRIPTION.	BY.
B	08/2023	REFERENCES TO CONSTRUCTIVE AND REGISTERED CONSTRUCTION DETAILS REMOVED. INSULATION REVISED FOR HH-SW-09	SJB
A	11/2015	LABC NOTE ADDED.	SJB

These details have been produced for guidance only. It is the responsibility of the building designer to ensure that the details shown are compatible with the overall building design and will satisfy the relevant parts of the Building Regulations applicable before they are adopted into the project design.



H+H UK Limited  
 Technical Services Dept.  
 Celcon House  
 Ightham, Sevenoaks  
 Kent, TN15 9HZ  
 Tel +44 (0)1732 880580  
 Fax +44 (0)1732 887013  
 Email tsd@hhcelcon.co.uk

TITLE		
Standard Junction Details (solid wall with external insulation)		
DWG No. INDEX		
DRAWN BY	CHECKED BY	
SJB	AHR	
DATE	SCALE	REV.NO.
Nov 2013	N.T.S.	B



B	08/2023	REFERENCES TO CONSTRUCTIVE AND REGISTERED CONSTRUCTION DETAILS REMOVED	SJB
A	11/2015	LABC NOTE ADDED.	SJB
REV.	DATE.	DESCRIPTION.	BY.

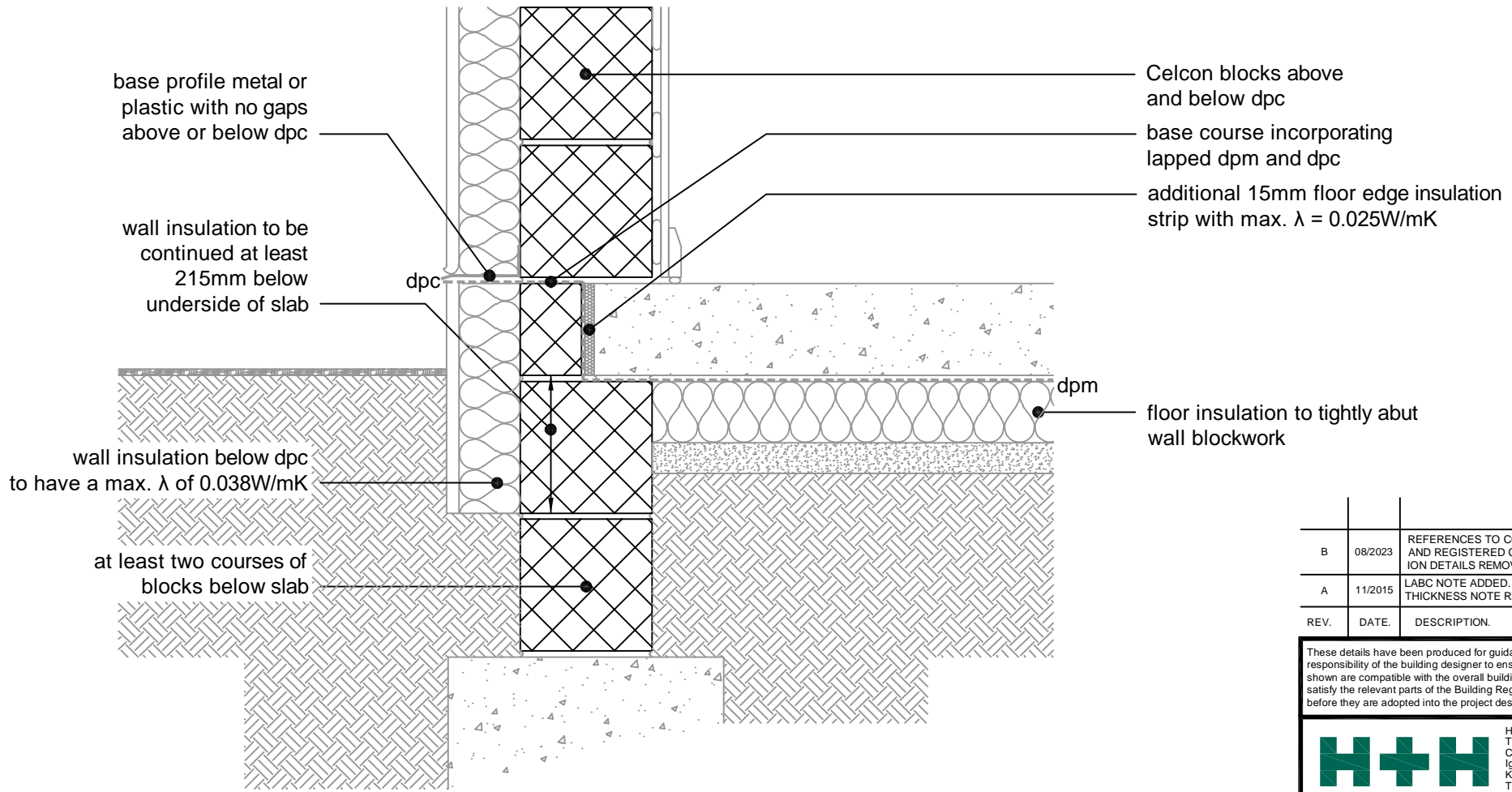
These details have been produced for guidance only. It is the responsibility of the building designer to ensure that the details shown are compatible with the overall building design and will satisfy the relevant parts of the Building Regulations applicable before they are adopted into the project design.

**H+H**  
PARTNERS IN WALL BUILDING

H+H UK Limited  
Technical Services Dept.  
Celcon House  
Ightham, Sevenoaks  
Kent, TN15 9HZ.  
Tel +44 (0)1732 880580  
Fax +44 (0)1732 887013  
Email tsd@hhcelcon.co.uk

TITLE		
Solid External Masonry Wall, Externally Insulated - Suspended Beam And Block Floor, Insulation Above Slab		
DWG No.		
HH-SW-01		
DRAWN BY	CHECKED BY	
SJB	AHR	
DATE	SCALE	REV.NO.
Nov 2013	1:100 @ A4	B

This junction detail has been assessed by H+H UK Ltd. for thermal performance based on various Celcon blocks and insulation combinations. Applicable  $\Psi$ -values and minimum temperature factors compatible with the latest Building Regulations can be found in our 'H+H Calculated  $\Psi$ -values' document, available to download from our website [www.hhcelcon.co.uk](http://www.hhcelcon.co.uk).



This junction detail has been assessed by H+H UK Ltd. for thermal performance based on various Celcon blocks and insulation combinations. Applicable  $\Psi$ -values and minimum temperature factors compatible with the latest Building Regulations can be found in our 'H+H Calculated  $\Psi$ -values' document, available to download from our website [www.hhcelcon.co.uk](http://www.hhcelcon.co.uk).

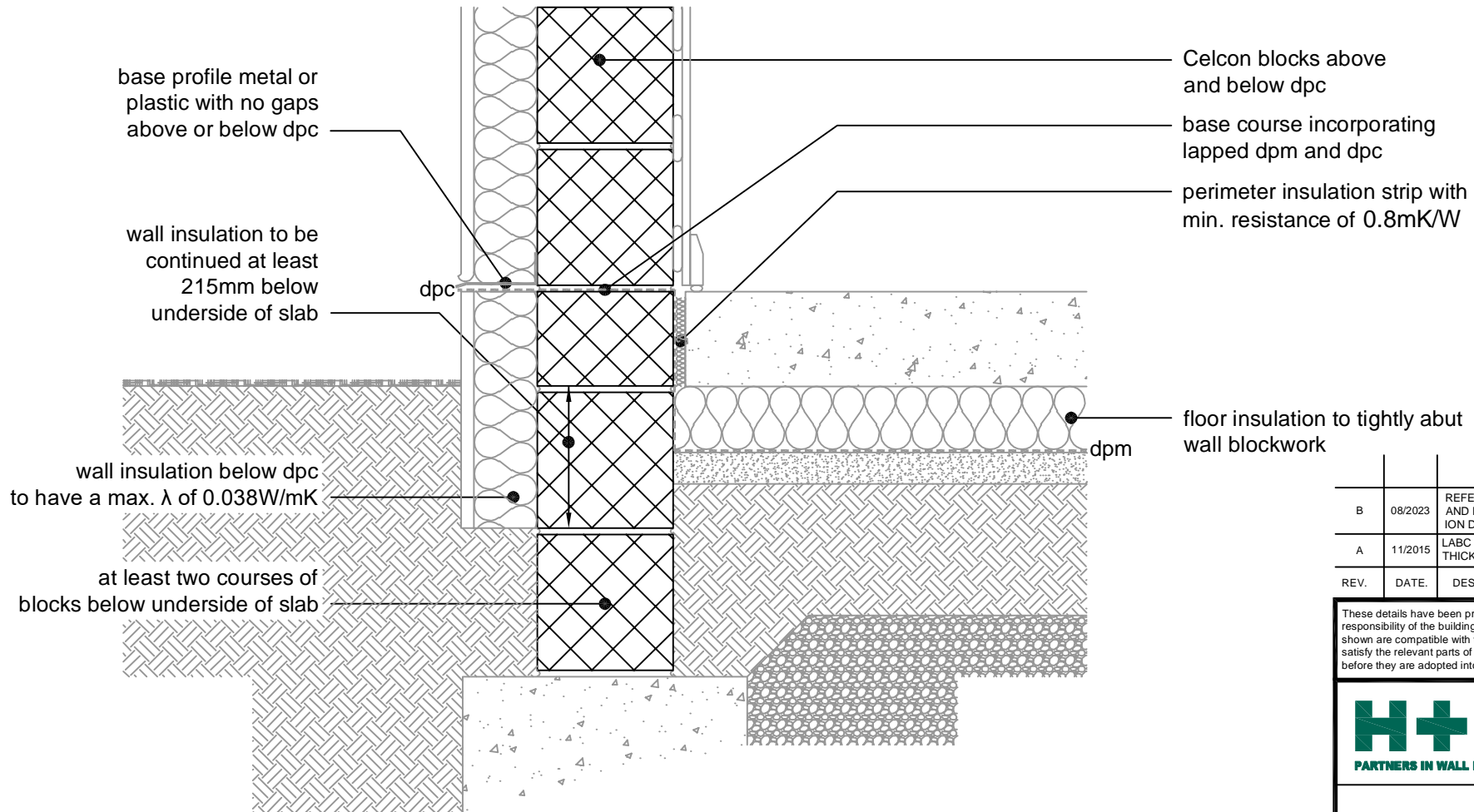
REV.	DATE.	DESCRIPTION.	BY.
B	08/2023	REFERENCES TO CONSTRUCTIVE AND REGISTERED CONSTRUCTION DETAILS REMOVED	SJB
A	11/2015	LABC NOTE ADDED. MAX. FLOOR THICKNESS NOTE REMOVED.	SJB

These details have been produced for guidance only. It is the responsibility of the building designer to ensure that the details shown are compatible with the overall building design and will satisfy the relevant parts of the Building Regulations applicable before they are adopted into the project design.

**H+H**  
**PARTNERS IN WALL BUILDING**

H+H UK Limited  
 Technical Services Dept.  
 Celcon House  
 Ightham, Sevenoaks  
 Kent, TN15 9HZ.  
 Tel +44 (0)1732 880580  
 Fax +44 (0)1732 887013  
 Email [tsd@hhcelcon.co.uk](mailto:tsd@hhcelcon.co.uk)

TITLE		
Solid External Masonry Wall, Externally Insulated - Suspended In-Situ Concrete Floor, Insulation Below Slab		
DWG No.		
HH-SW-02		
DRAWN BY	CHECKED BY	
SJB	AHR	
DATE	SCALE	REV.NO.
Nov 2014	1:100 @ A4	B



REV.	DATE	DESCRIPTION	BY.
B	08/2023	REFERENCES TO CONSTRUCTIVE AND REGISTERED CONSTRUCTION DETAILS REMOVED	SJB
A	11/2015	LABC NOTE ADDED, MAX. FLOOR THICKNESS NOTE REMOVED	SJB

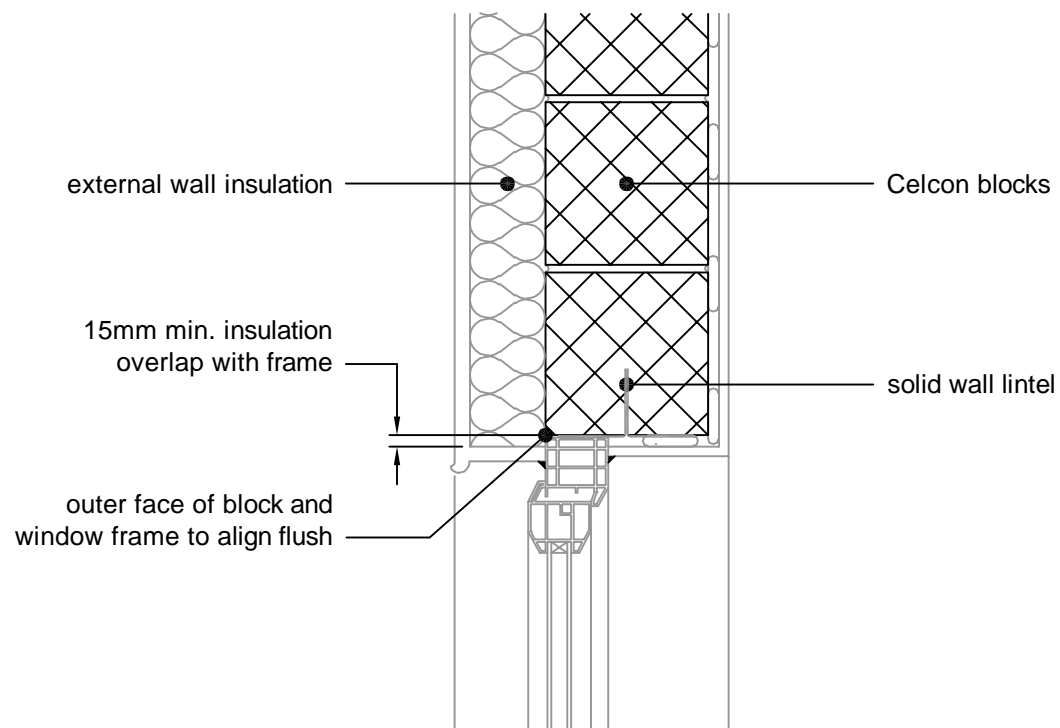
These details have been produced for guidance only. It is the responsibility of the building designer to ensure that the details shown are compatible with the overall building design and will satisfy the relevant parts of the Building Regulations applicable before they are adopted into the project design.



H+H UK Limited  
 Technical Services Dept.  
 Celcon House  
 Ightham, Sevenoaks  
 Kent, TN15 9HZ  
 Tel +44 (0)1732 880580  
 Fax +44 (0)1732 887013  
 Email [tsd@hhcelcon.co.uk](mailto:tsd@hhcelcon.co.uk)

TITLE		
Solid External Masonry Wall, Externally Insulated - Concrete Ground Bearing Floor, Insulation Below Slab		
DWG No.		
HH-SW-03		
DRAWN BY	CHECKED BY	
SJB	AHR	
DATE	SCALE	REV.NO.
Nov 2013	1:100 @ A4	B

This junction detail has been assessed by H+H UK Ltd. for thermal performance based on various Celcon blocks and insulation combinations. Applicable  $\Psi$ -values and minimum temperature factors compatible with the latest Building Regulations can be found in our 'H+H Calculated  $\Psi$ -values' document, available to download from our website [www.hhcelcon.co.uk](http://www.hhcelcon.co.uk).



This junction detail has been assessed by H+H UK Ltd. for thermal performance based on various Celcon blocks and insulation combinations. Applicable  $\Psi$ -values and minimum temperature factors compatible with the latest Building Regulations can be found in our 'H+H Calculated  $\Psi$ -values' document, available to download from our website [www.hhcelcon.co.uk](http://www.hhcelcon.co.uk).

REV.	DATE.	DESCRIPTION.	BY.
B	08/2023	REFERENCES TO CONSTRUCTIVE AND REGISTERED CONSTRUCTION DETAILS REMOVED	SJB
A	11/2015	LABC NOTE ADDED.	SJB

These details have been produced for guidance only. It is the responsibility of the building designer to ensure that the details shown are compatible with the overall building design and will satisfy the relevant parts of the Building Regulations applicable before they are adopted into the project design.



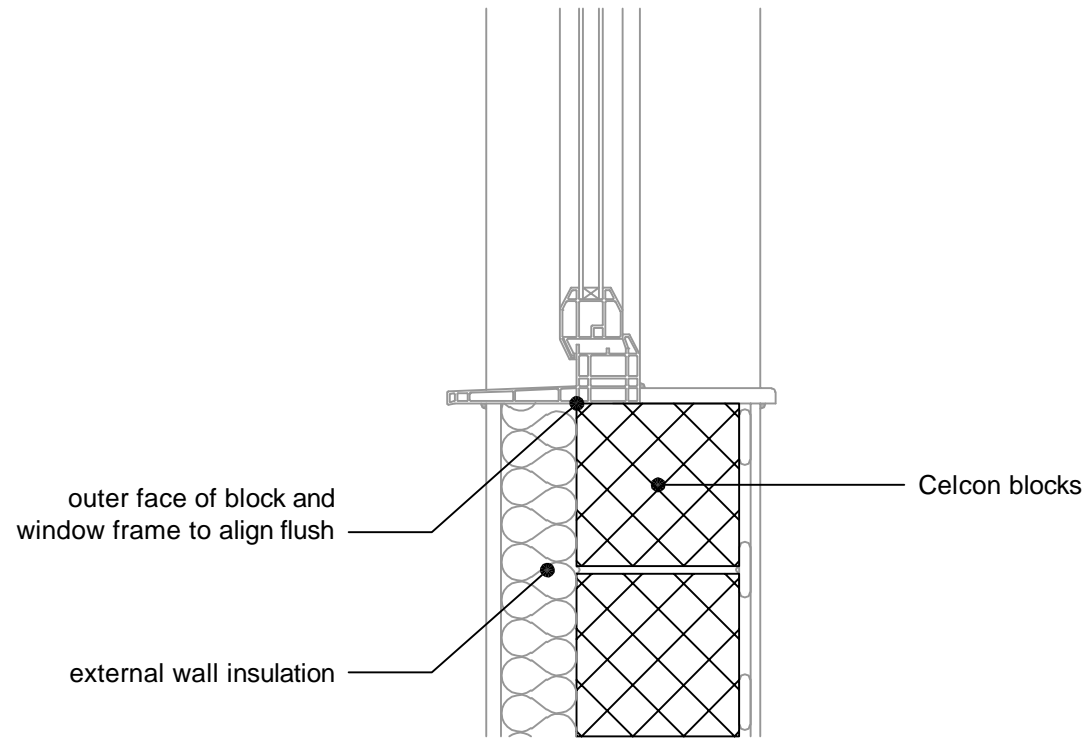
H+H UK Limited  
 Technical Services Dept.  
 Celcon House  
 Ightham, Sevenoaks  
 Kent, TN15 9HZ.  
 Tel +44 (0)1732 880580  
 Fax +44 (0)1732 887013  
 Email [tsd@hhcelcon.co.uk](mailto:tsd@hhcelcon.co.uk)

TITLE  
 Solid External Masonry Wall,  
 Externally Insulated - Solid Wall Lintel

DWG No. HH-SW-04

DRAWN BY SJB CHECKED BY AHR

DATE Nov 2013 SCALE 1:100 @ A4 REV.NO. B



REV.	DATE.	DESCRIPTION.	BY.
B	08/2023	REFERENCES TO CONSTRUCTIVE AND REGISTERED CONSTRUCTION DETAILS REMOVED	SJB
A	11/2015	LABC NOTE ADDED.	SJB

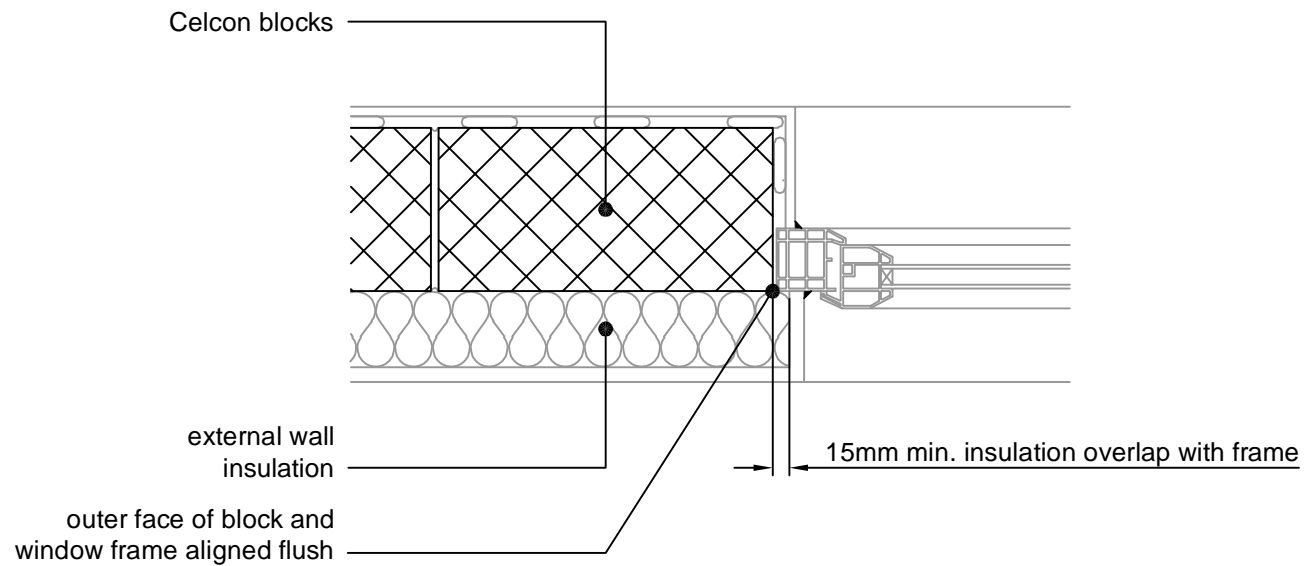
These details have been produced for guidance only. It is the responsibility of the building designer to ensure that the details shown are compatible with the overall building design and will satisfy the relevant parts of the Building Regulations applicable before they are adopted into the project design.



H+H UK Limited  
Technical Services Dept.  
Celcon House  
Ightham, Sevenoaks  
Kent, TN15 9HZ.  
Tel +44 (0)1732 880580  
Fax +44 (0)1732 887013  
Email [tsd@hhcelcon.co.uk](mailto:tsd@hhcelcon.co.uk)

TITLE		
Solid External Masonry Wall, Externally Insulated - Sill		
DWG No. HH-SW-05		
DRAWN BY	CHECKED BY	
SJB	AHR	
DATE	SCALE	REV.NO.
Nov 2013	1:100 @ A4	B

This junction detail has been assessed by H+H UK Ltd. for thermal performance based on various Celcon blocks and insulation combinations. Applicable  $\Psi$ -values and minimum temperature factors compatible with the latest Building Regulations can be found in our 'H+H Calculated  $\Psi$ -values' document, available to download from our website [www.hhcelcon.co.uk](http://www.hhcelcon.co.uk).



This junction detail has been assessed by H+H UK Ltd. for thermal performance based on various Celcon blocks and insulation combinations. Applicable  $\Psi$ -values and minimum temperature factors compatible with the latest Building Regulations can be found in our 'H+H Calculated  $\Psi$ -values' document, available to download from our website [www.hhcelcon.co.uk](http://www.hhcelcon.co.uk).

REV.	DATE.	DESCRIPTION.	BY.
B	08/2023	REFERENCES TO CONSTRUCTIVE AND REGISTERED CONSTRUCTION DETAILS REMOVED	SJB
A	11/2015	LABC NOTE ADDED.	SJB

These details have been produced for guidance only. It is the responsibility of the building designer to ensure that the details shown are compatible with the overall building design and will satisfy the relevant parts of the Building Regulations applicable before they are adopted into the project design.



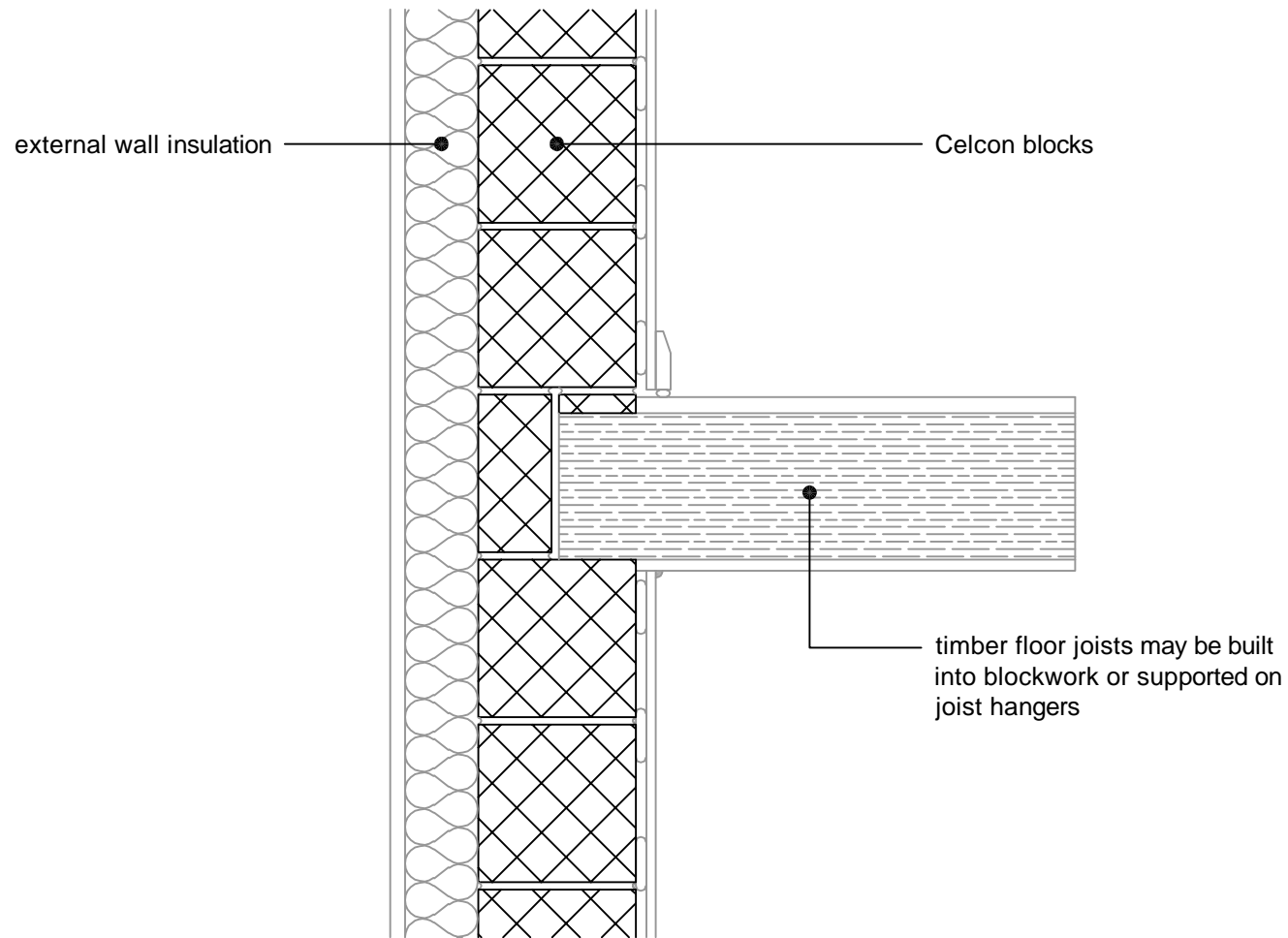
H+H UK Limited  
 Technical Services Dept.  
 Celcon House  
 Ightham, Sevenoaks  
 Kent, TN15 9HZ.  
 Tel +44 (0)1732 880580  
 Fax +44 (0)1732 887013  
 Email [tsd@hhcelcon.co.uk](mailto:tsd@hhcelcon.co.uk)

TITLE  
**Solid External Masonry Wall,  
 Externally Insulated - Jamb**

DWG No. **HH-SW-06**

DRAWN BY **SJB** CHECKED BY **AHR**

DATE **Nov 2013** SCALE **1:100 @ A4** REV.NO. **B**



REV.	DATE	DESCRIPTION	BY.
B	08/2023	REFERENCES TO CONSTRUCTIVE AND REGISTERED CONSTRUCTION DETAILS REMOVED	SJB
A	11/2015	LABC NOTE ADDED.	SJB

These details have been produced for guidance only. It is the responsibility of the building designer to ensure that the details shown are compatible with the overall building design and will satisfy the relevant parts of the Building Regulations applicable before they are adopted into the project design.



H+H UK Limited  
 Technical Services Dept.  
 Celcon House  
 Ightham, Sevenoaks  
 Kent, TN15 9HZ.  
 Tel +44 (0)1732 880580  
 Fax +44 (0)1732 887013  
 Email [tsd@hhcelcon.co.uk](mailto:tsd@hhcelcon.co.uk)

TITLE **Solid External Masonry Wall,  
 Externally Insulated - Intermediate Timber  
 Floor Within A Dwelling**

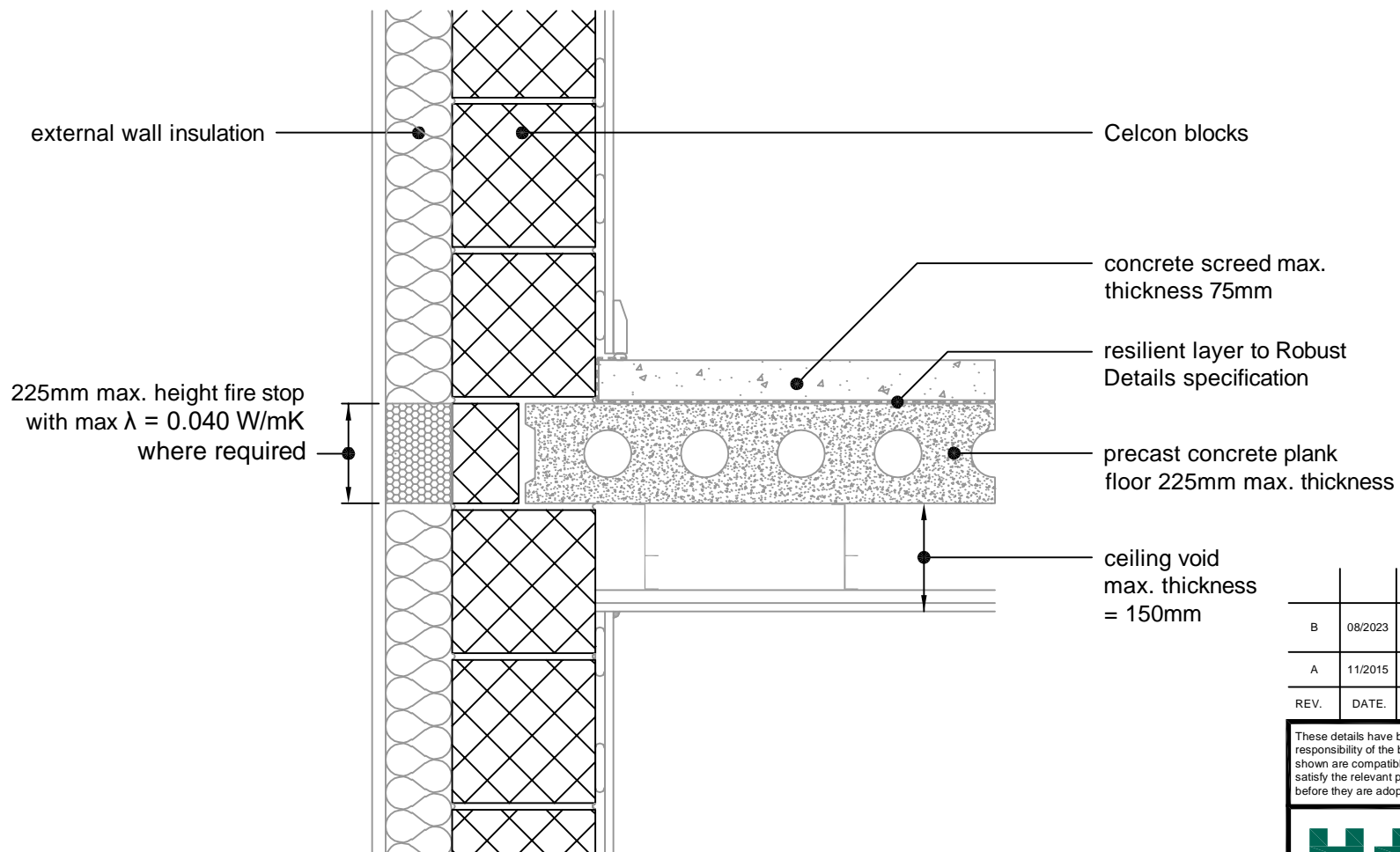
DWG No. **HH-SW-07**

DRAWN BY **SJB** CHECKED BY **AHR**

DATE **Nov 2013** SCALE **1:100 @ A4** REV.NO. **B**

This junction detail has been assessed by H+H UK Ltd. for thermal performance based on various Celcon blocks and insulation combinations. Applicable  $\Psi$ -values and minimum temperature factors compatible with the latest Building Regulations can be found in our 'H+H Calculated  $\Psi$ -values' document, available to download from our website [www.hhcelcon.co.uk](http://www.hhcelcon.co.uk).





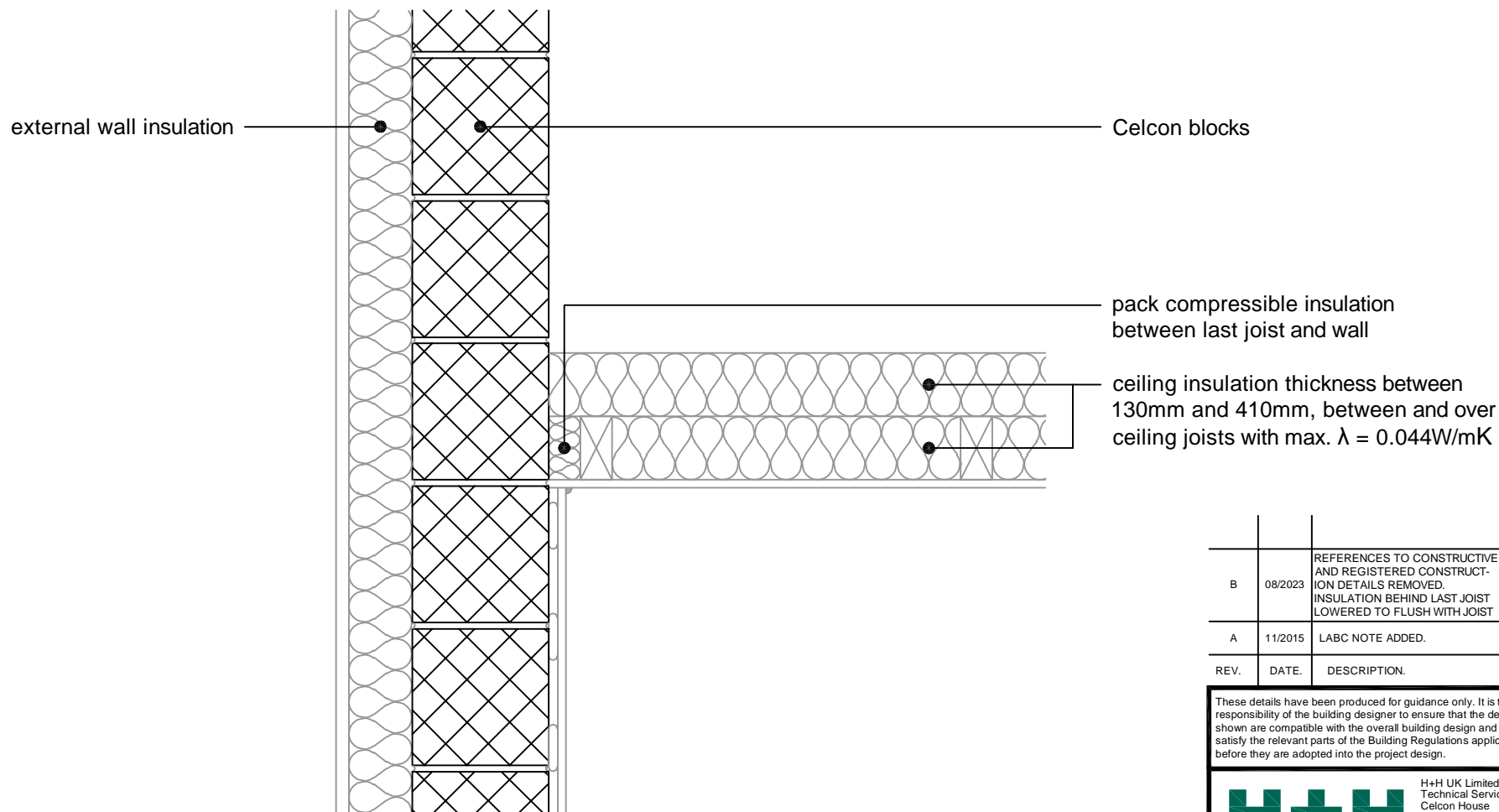
REV.	DATE.	DESCRIPTION.	BY.
B	08/2023	REFERENCES TO CONSTRUCTIVE AND REGISTERED CONSTRUCTION DETAILS REMOVED	SJB
A	11/2015	LABC NOTE ADDED.	SJB

These details have been produced for guidance only. It is the responsibility of the building designer to ensure that the details shown are compatible with the overall building design and will satisfy the relevant parts of the Building Regulations applicable before they are adopted into the project design.


**H+H UK Limited**  
 Technical Services Dept.  
 Celcon House  
 Ightham, Sevenoaks  
 Kent, TN15 9HZ.  
 Tel +44 (0)1732 880580  
 Fax +44 (0)1732 887013  
 Email tsd@hhcelcon.co.uk

<b>TITLE</b> Solid External Masonry Wall, Externally Insulated - Precast Concrete Separating Floor Between Dwellings		
<b>DWG No.</b> HH-SW-08		
<b>DRAWN BY</b> SJB	<b>CHECKED BY</b> AHR	
<b>DATE</b> Nov 2013	<b>SCALE</b> 1:100 @ A4	<b>REV.NO.</b> B

This junction detail has been assessed by H+H UK Ltd. for thermal performance based on various Celcon blocks and insulation combinations. Applicable  $\Psi$ -values and minimum temperature factors compatible with the latest Building Regulations can be found in our 'H+H Calculated  $\Psi$ -values' document, available to download from our website [www.hhcelcon.co.uk](http://www.hhcelcon.co.uk).



B	08/2023	REFERENCES TO CONSTRUCTIVE AND REGISTERED CONSTRUCTION DETAILS REMOVED. INSULATION BEHIND LAST JOIST LOWERED TO FLUSH WITH JOIST	SJB
A	11/2015	LABC NOTE ADDED.	SJB
REV.	DATE.	DESCRIPTION.	BY.

These details have been produced for guidance only. It is the responsibility of the building designer to ensure that the details shown are compatible with the overall building design and will satisfy the relevant parts of the Building Regulations applicable before they are adopted into the project design.



H+H UK Limited  
 Technical Services Dept.  
 Celcon House  
 Ightham, Sevenoaks  
 Kent, TN15 9HZ.  
 Tel +44 (0)1732 880580  
 Fax +44 (0)1732 887013  
 Email tsd@hhcelcon.co.uk

TITLE Solid External Masonry Wall,  
 Externally Insulated - Pitched Roof, Gable,  
 Insulation At Ceiling Level, Ventilated Loft

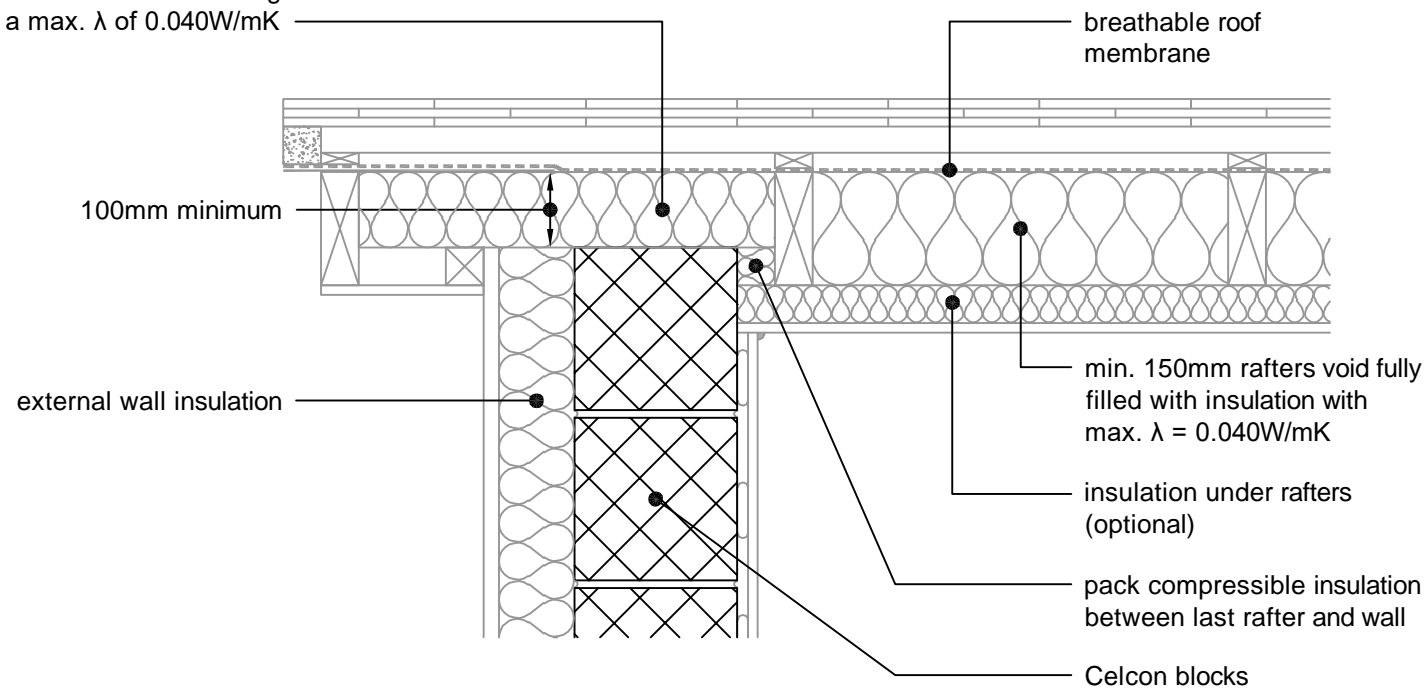
DWG No. HH-SW-09

DRAWN BY SJB CHECKED BY AHR

DATE Nov 2013 SCALE 1:100 @ A4 REV.NO. B

This junction detail has been assessed by H+H UK Ltd. for thermal performance based on various Celcon blocks and insulation combinations. Applicable  $\Psi$ -values and minimum temperature factors compatible with the latest Building Regulations can be found in our 'H+H Calculated  $\Psi$ -values' document, available to download from our website [www.hhcelcon.co.uk](http://www.hhcelcon.co.uk).

fill this void with insulation having  
a max.  $\lambda$  of 0.040W/mK



REV.	DATE	DESCRIPTION	BY.
B	08/2023	REFERENCES TO CONSTRUCTIVE AND REGISTERED CONSTRUCTION DETAILS REMOVED	SJB
A	11/2015	LABC NOTE ADDED.	SJB

These details have been produced for guidance only. It is the responsibility of the building designer to ensure that the details shown are compatible with the overall building design and will satisfy the relevant parts of the Building Regulations applicable before they are adopted into the project design.



H+H UK Limited  
Technical Services Dept.  
Celcon House  
Ightham, Sevenoaks  
Kent, TN15 9HZ.  
Tel +44 (0)1732 880580  
Fax +44 (0)1732 887013  
Email [tsd@hhcelcon.co.uk](mailto:tsd@hhcelcon.co.uk)

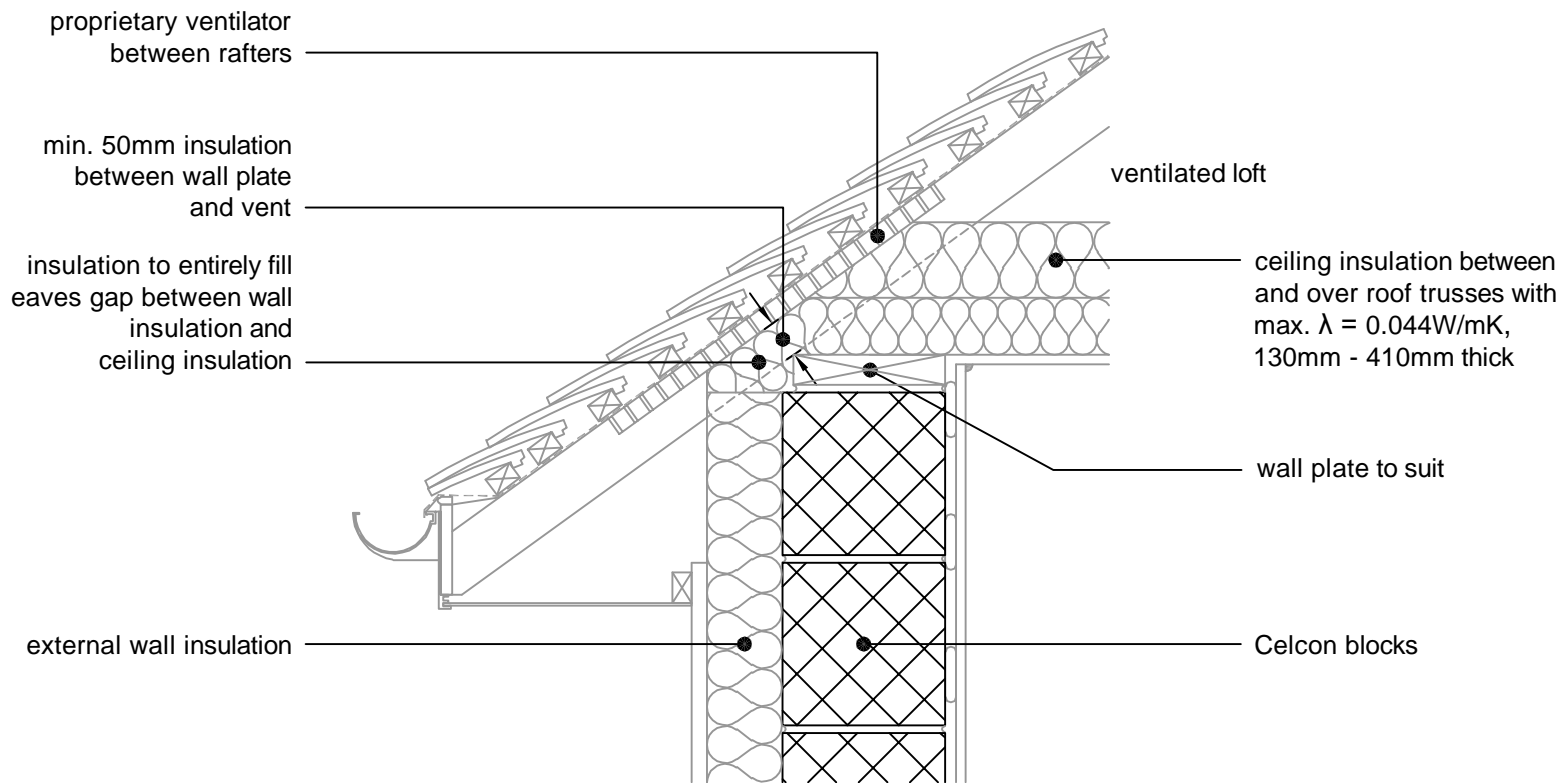
TITLE  
Solid External Masonry Wall,  
Externally Insulated - Pitched Roof, Gable, Insulation  
At Rafter Level, Unventilated Rafter Void

DWG No. **HH-SW-10**

DRAWN BY **SJB** CHECKED BY **AHR**

DATE **Nov 2013** SCALE **1:100 @ A4** REV.NO. **B**

This junction detail has been assessed by H+H UK Ltd. for thermal performance based on various Celcon blocks and insulation combinations. Applicable  $\Psi$ -values and minimum temperature factors compatible with the latest Building Regulations can be found in our 'H+H Calculated  $\Psi$ -values' document, available to download from our website [www.hhcelcon.co.uk](http://www.hhcelcon.co.uk).



B	08/2023	REFERENCES TO CONSTRUCTIVE AND REGISTERED CONSTRUCTION DETAILS REMOVED	SJB
A	11/2015	LABC NOTE ADDED.	SJB
REV.	DATE.	DESCRIPTION.	BY.

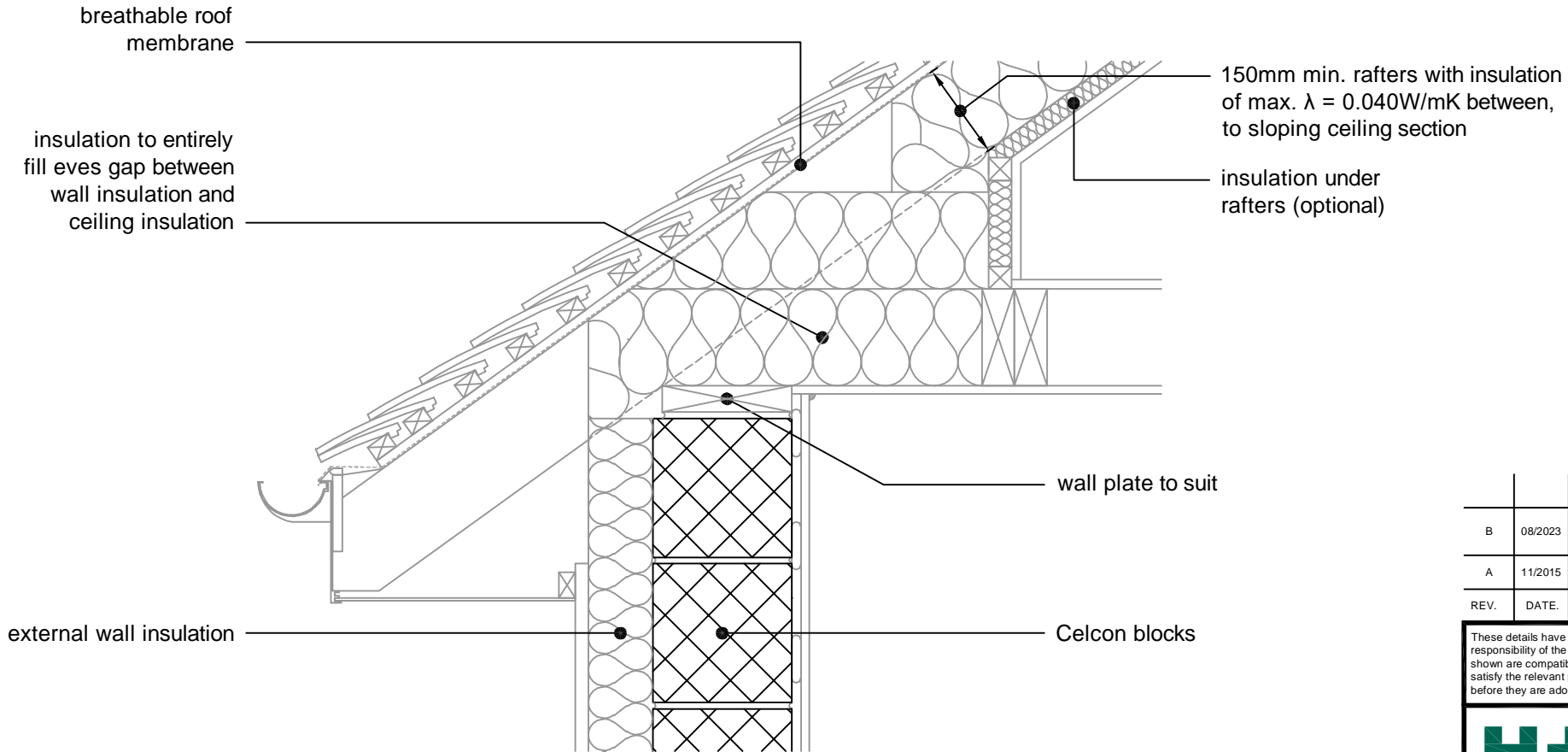
These details have been produced for guidance only. It is the responsibility of the building designer to ensure that the details shown are compatible with the overall building design and will satisfy the relevant parts of the Building Regulations applicable before they are adopted into the project design.



H+H UK Limited  
 Technical Services Dept.  
 Celcon House  
 Ightham, Sevenoaks  
 Kent, TN15 9HZ.  
 Tel +44 (0)1732 880580  
 Fax +44 (0)1732 887013  
 Email tsd@hhcelcon.co.uk

TITLE Solid External Masonry Wall, Externally Insulated - Pitched Roof, Eaves, Insulation At Ceiling Level, Ventilated Loft		
DWG No. HH-SW-11		
DRAWN BY SJB	CHECKED BY AHR	
DATE Nov 2013	SCALE 1:100 @ A4	REV.NO. B

This junction detail has been assessed by H+H UK Ltd. for thermal performance based on various Celcon blocks and insulation combinations. Applicable  $\Psi$ -values and minimum temperature factors compatible with the latest Building Regulations can be found in our 'H+H Calculated  $\Psi$ -values' document, available to download from our website [www.hhcelcon.co.uk](http://www.hhcelcon.co.uk).



REV.	DATE	DESCRIPTION	BY.
B	08/2023	REFERENCES TO CONSTRUCTIVE AND REGISTERED CONSTRUCTION DETAILS REMOVED	SJB
A	11/2015	LABC NOTE ADDED.	SJB

These details have been produced for guidance only. It is the responsibility of the building designer to ensure that the details shown are compatible with the overall building design and will satisfy the relevant parts of the Building Regulations applicable before they are adopted into the project design.



H+H UK Limited  
 Technical Services Dept.  
 Celcon House  
 Ightham, Sevenoaks  
 Kent, TN15 9HZ.  
 Tel +44 (0)1732 880580  
 Fax +44 (0)1732 887013  
 Email tsd@hhcelcon.co.uk

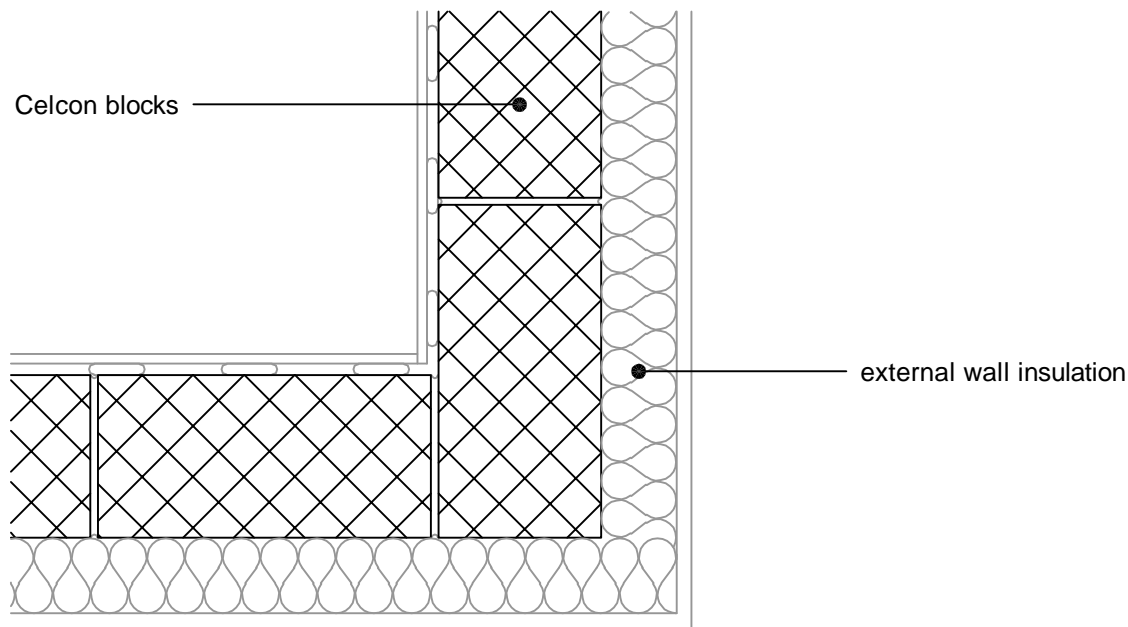
TITLE  
 Solid External Masonry Wall,  
 Externally Insulated - Pitched Roof, Eaves, Insulation  
 At Rafter Level, Unventilated Rafter Void

DWG No. **HH-SW-12**

DRAWN BY **SJB** CHECKED BY **AHR**

DATE **Nov 2013** SCALE **1:100 @ A4** REV.NO. **B**

This junction detail has been assessed by H+H UK Ltd. for thermal performance based on various Celcon blocks and insulation combinations. Applicable  $\Psi$ -values and minimum temperature factors compatible with the latest Building Regulations can be found in our 'H+H Calculated  $\Psi$ -values' document, available to download from our website [www.hhcelcon.co.uk](http://www.hhcelcon.co.uk).



This junction detail has been assessed by H+H UK Ltd. for thermal performance based on various Celcon blocks and insulation combinations. Applicable  $\Psi$ -values and minimum temperature factors compatible with the latest Building Regulations can be found in our 'H+H Calculated  $\Psi$ -values' document, available to download from our website [www.hhcelcon.co.uk](http://www.hhcelcon.co.uk).

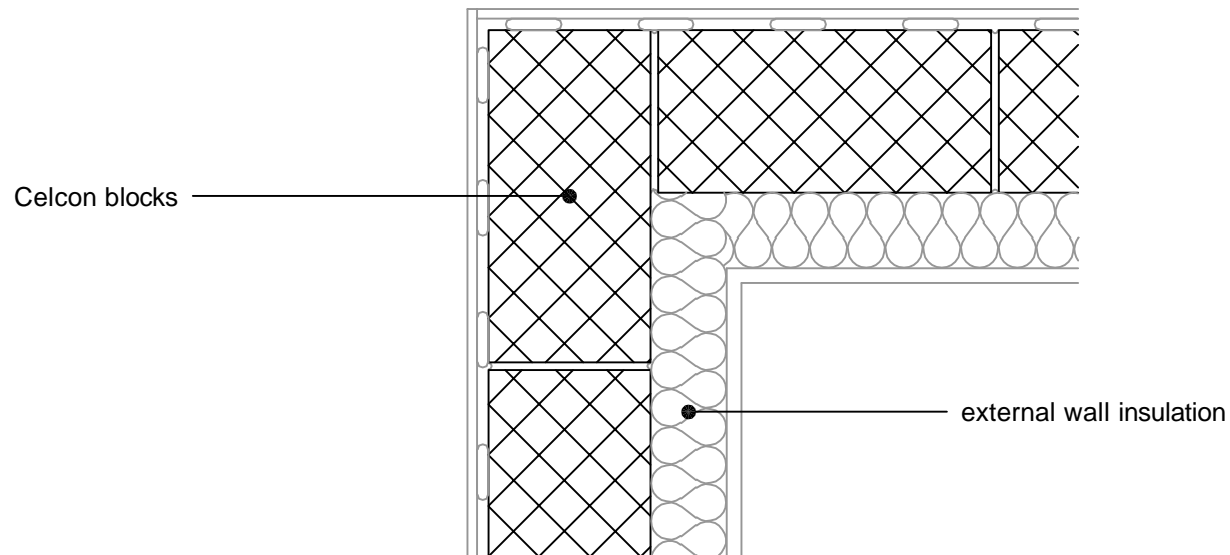
REV.	DATE.	DESCRIPTION.	BY.
B	08/2023	REFERENCES TO CONSTRUCTIVE AND REGISTERED CONSTRUCTION DETAILS REMOVED	SJB
A	11/2015	LABC NOTE ADDED.	SJB

These details have been produced for guidance only. It is the responsibility of the building designer to ensure that the details shown are compatible with the overall building design and will satisfy the relevant parts of the Building Regulations applicable before they are adopted into the project design.



H+H UK Limited  
 Technical Services Dept.  
 Celcon House  
 Ightham, Sevenoaks  
 Kent, TN15 9HZ.  
 Tel +44 (0)1732 880580  
 Fax +44 (0)1732 887013  
 Email [tsd@hhcelcon.co.uk](mailto:tsd@hhcelcon.co.uk)

TITLE		
Solid External Masonry Wall, Externally Insulated - Normal Corner		
DWG No. HH-SW-13		
DRAWN BY	CHECKED BY	
SJB	AHR	
DATE	SCALE	REV.NO.
Nov 2013	1:100 @ A4	B



REV.	DATE.	DESCRIPTION.	BY.
B	08/2023	REFERENCES TO CONSTRUCTIVE AND REGISTERED CONSTRUCTION DETAILS REMOVED	SJB
A	11/2015	LABC NOTE ADDED.	SJB

These details have been produced for guidance only. It is the responsibility of the building designer to ensure that the details shown are compatible with the overall building design and will satisfy the relevant parts of the Building Regulations applicable before they are adopted into the project design.



H+H UK Limited  
 Technical Services Dept.  
 Celcon House  
 Ightham, Sevenoaks  
 Kent, TN15 9HZ.  
 Tel +44 (0)1732 880580  
 Fax +44 (0)1732 887013  
 Email [tsd@hhcelcon.co.uk](mailto:tsd@hhcelcon.co.uk)

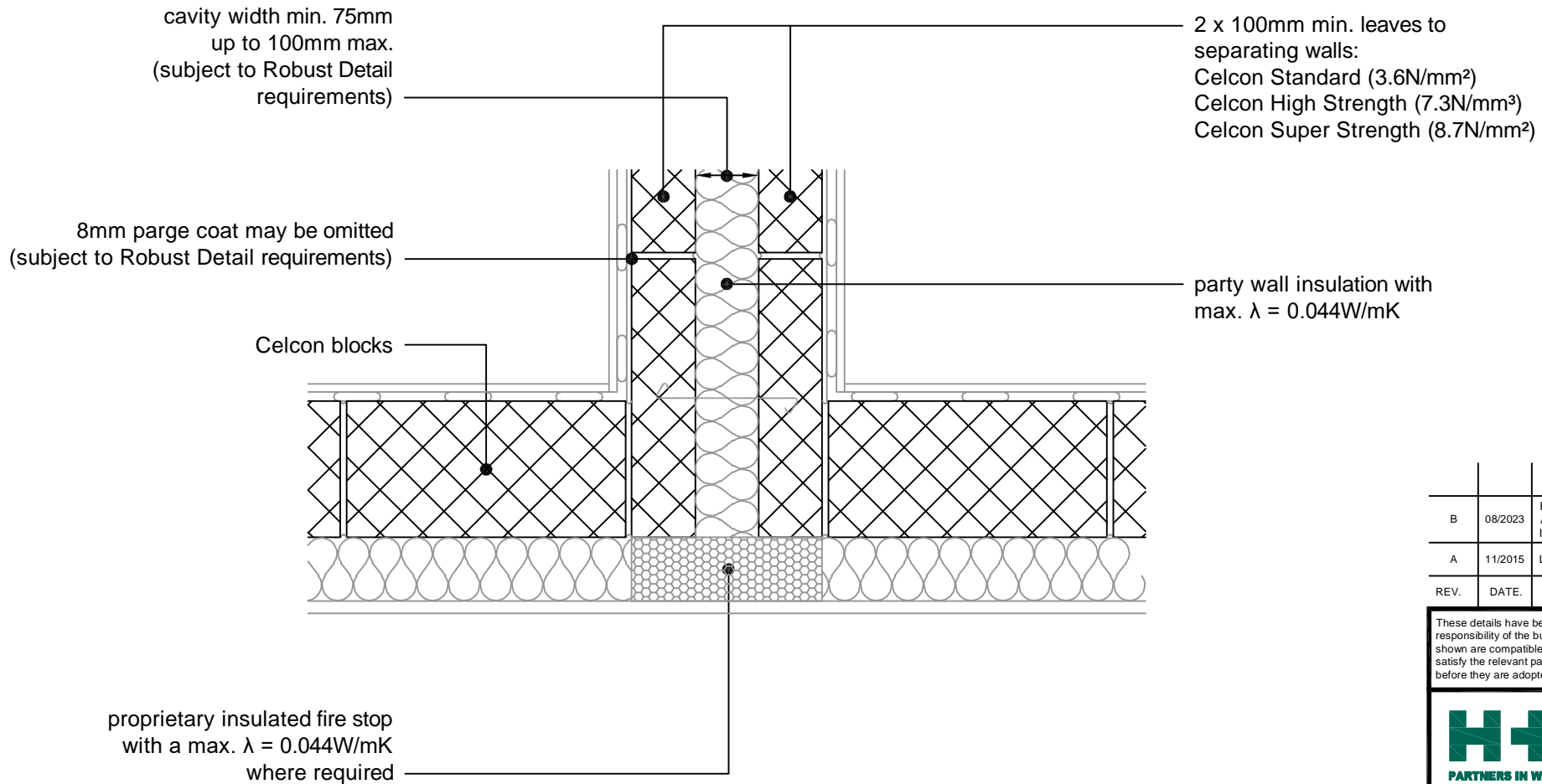
TITLE  
 Solid External Masonry Wall,  
 Externally Insulated - Inverted Corner

DWG No. HH-SW-14

DRAWN BY SJB CHECKED BY AHR

DATE Nov 2013 SCALE 1:100 @ A4 REV.NO. B

This junction detail has been assessed by H+H UK Ltd. for thermal performance based on various Celcon blocks and insulation combinations. Applicable  $\Psi$ -values and minimum temperature factors compatible with the latest Building Regulations can be found in our 'H+H Calculated  $\Psi$ -values' document, available to download from our website [www.hhcelcon.co.uk](http://www.hhcelcon.co.uk).



B	08/2023	REFERENCES TO CONSTRUCTIVE AND REGISTERED CONSTRUCTION DETAILS REMOVED	SJB
A	11/2015	LABC NOTE ADDED.	SJB
REV.	DATE.	DESCRIPTION.	BY.

These details have been produced for guidance only. It is the responsibility of the building designer to ensure that the details shown are compatible with the overall building design and will satisfy the relevant parts of the Building Regulations applicable before they are adopted into the project design.



**H+H UK Limited**  
 Technical Services Dept.  
 Celcon House  
 Ightham, Sevenoaks  
 Kent, TN15 9HZ.  
 Tel +44 (0)1732 880580  
 Fax +44 (0)1732 887013  
 Email [tsd@hhcelcon.co.uk](mailto:tsd@hhcelcon.co.uk)

TITLE <b>Solid External Masonry Wall, Externally Insulated - Party Wall Between Dwellings</b>		
DWG No. <b>HH-SW-15</b>		
DRAWN BY <b>SJB</b>	CHECKED BY <b>AHR</b>	
DATE <b>Nov 2013</b>	SCALE <b>1:100 @ A4</b>	REV.NO. <b>B</b>

This junction detail has been assessed by H+H UK Ltd. for thermal performance based on various Celcon blocks and insulation combinations. Applicable  $\Psi$ -values and minimum temperature factors compatible with the latest Building Regulations can be found in our 'H+H Calculated  $\Psi$ -values' document, available to download from our website [www.hhcelcon.co.uk](http://www.hhcelcon.co.uk).